

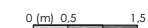
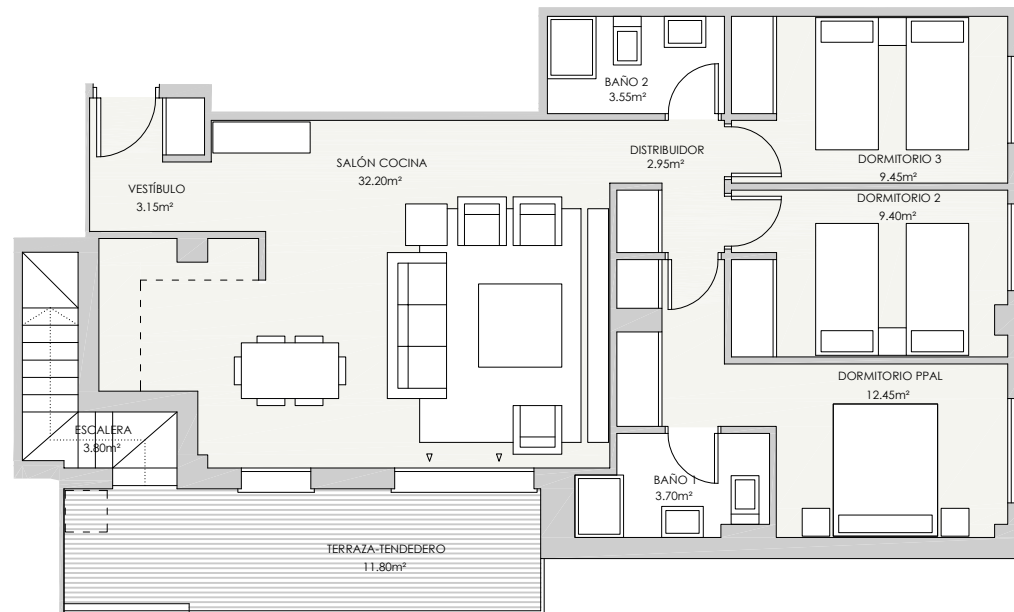
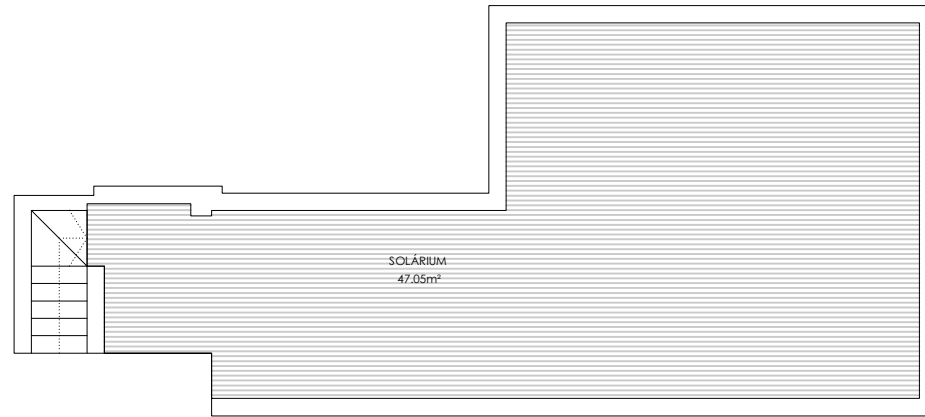
VT 3.21.1 y 3.21.2 2 uds

**RESUMEN SUPERFICIES ÚTILES**

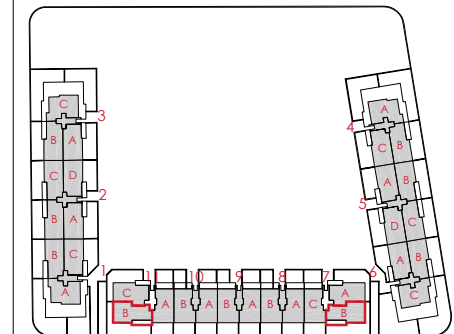
Total superficie útil interior	76.85 m <sup>2</sup>
Total superficies útil exterior	62.65 m <sup>2</sup>
<b>Total superficie útil vivienda</b>	<b>139.50 m<sup>2</sup></b>

**SUPERFICIES CONSTRUIDAS**

Total superficie construida interior	90.70 m <sup>2</sup>
Total superficies construida exterior	70.40 m <sup>2</sup>
<b>TOTAL SUPERFICIE CONSTRUIDA CON COMUNES</b>	<b>167.77 m<sup>2</sup></b>



LOCALIZACIÓN  
PLANTA TERCERA Y ÁTICO



**Gesbro**

